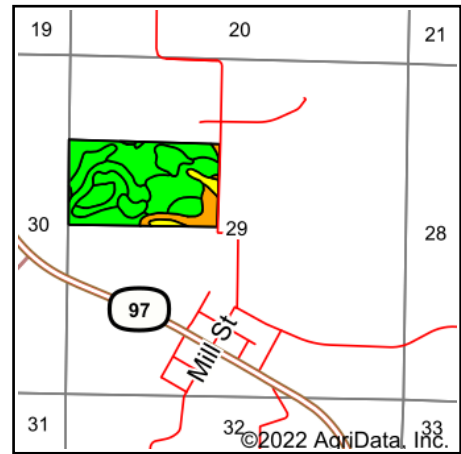
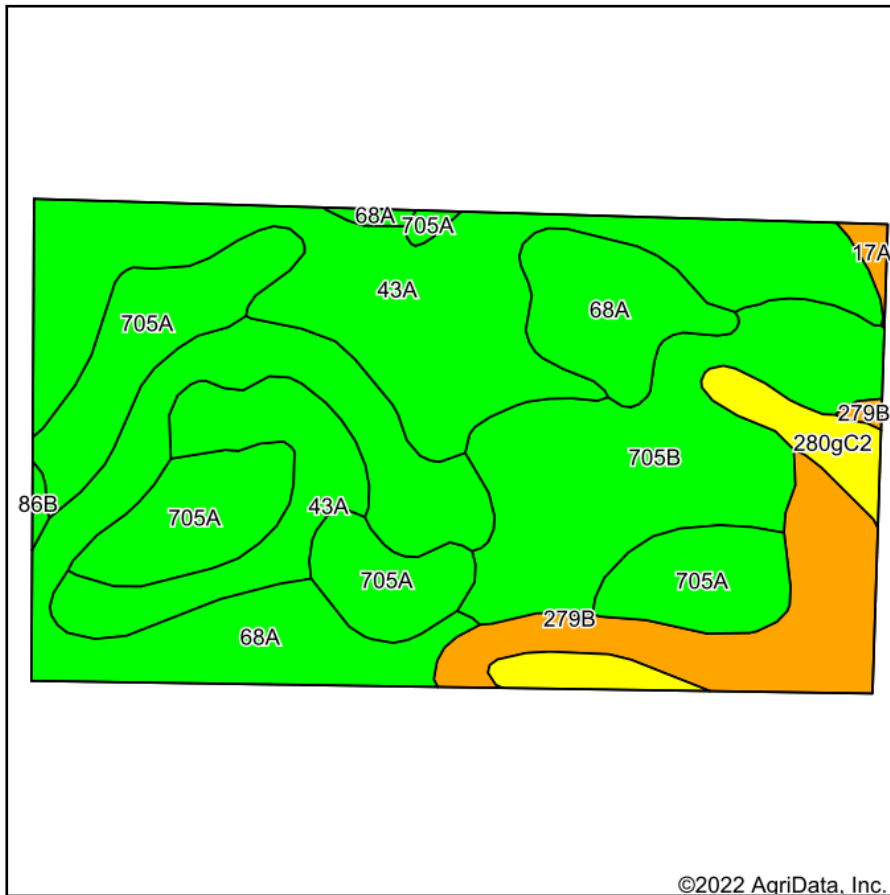


# Soils Map



State: **Illinois**  
 County: **Sangamon**  
 Location: **29-17N-6W**  
 Township: **Gardner**  
 Acres: **71.5**  
 Date: **11/29/2022**



Soils data provided by USDA and NRCS.

Area Symbol: IL167, Soil Area Version: 15													
Code	Soil Description	Acres	Percent of field	Il. State Productivity Index Legend	Subsoil rooting <b>a</b>	Corn Bu/A	Soybeans Bu/A	Wheat Bu/A	Oats Bu/A <b>b</b>	Sorghum <b>c</b> Bu/A	Alfalfa <b>d</b> hay, T/A	Grass-legume <b>e</b> hay, T/A	Crop productivity index for optimum management
43A	Ipava silt loam, 0 to 2 percent slopes	20.66	28.9%		FAV	191	62	77	100	0	0.00	5.90	142
68A	Sable silty clay loam, 0 to 2 percent slopes	15.65	21.9%		FAV	192	63	74	99	0	0.00	5.77	143
705A	Buckhart silt loam, 0 to 2 percent slopes	13.46	18.8%		FAV	190	61	74	100	0	7.40	0.00	142
**705B	Buckhart silt loam, 2 to 5 percent slopes	12.05	16.9%		FAV	**188	**60	**73	**99	0	**7.33	0.00	**141
**279B	Rozetta silt loam, 2 to 5 percent slopes	6.43	9.0%		FAV	**162	**50	**64	**83	0	**5.22	0.00	**119
**280gC2	Fayette silt loam, glaciated, 5 to 10 percent slopes, eroded	2.75	3.8%		FAV	**155	**49	**61	**79	0	**4.90	0.00	**113
17A	Keomah silt loam, 0 to 2 percent slopes	0.34	0.5%		FAV	161	51	65	83	0	0.00	5.14	119
**86B	Osco silt loam, 2 to 5 percent slopes	0.16	0.2%		FAV	**189	**59	**74	**101	0	**6.83	0.00	**140
<b>Weighted Average</b>						<b>186.4</b>	<b>60.1</b>	<b>73.3</b>	<b>97.2</b>	<b>*-</b>	<b>3.30</b>	<b>2.99</b>	<b>138.8</b>

**Table: Optimum Crop Productivity Ratings for Illinois Soil by K.R. Olson and J.M. Lang, Office of Research, ACES, University of Illinois at Champaign-Urbana.** Version: 1/2/2012 Amended Table S2 B811

Crop yields and productivity indices for optimum management (B811) are maintained at the following NRES web site: <http://soilproductivity.nres.illinois.edu/>

\*\* Indexes adjusted for slope and erosion according to Bulletin 811 Table S3

**a** UNF = unfavorable; FAV = favorable

**b** Soils in the southern region were not rated for oats and are shown with a zero "0".

**c** Soils in the northern region or in both regions were not rated for grain sorghum and are shown with a zero "0".

**d** Soils in the poorly drained group were not rated for alfalfa and are shown with a zero "0".

**e** Soils in the well drained group were not rated for grass-legume and are shown with a zero "0".

Soils data provided by USDA and NRCS. Soils data provided by University of Illinois at Champaign-Urbana.